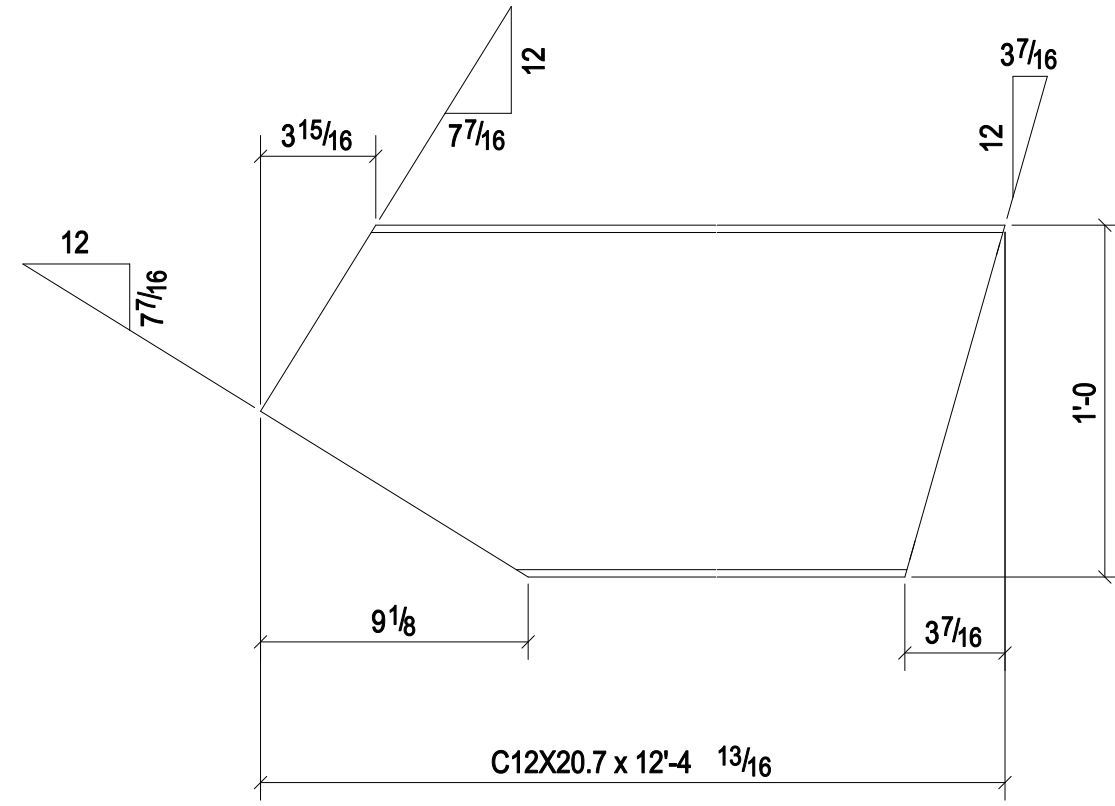
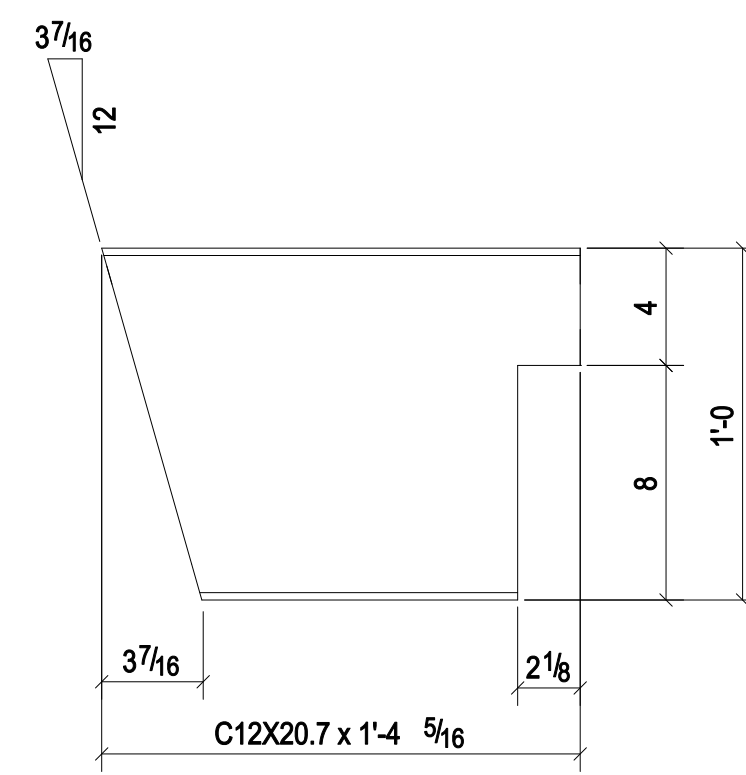


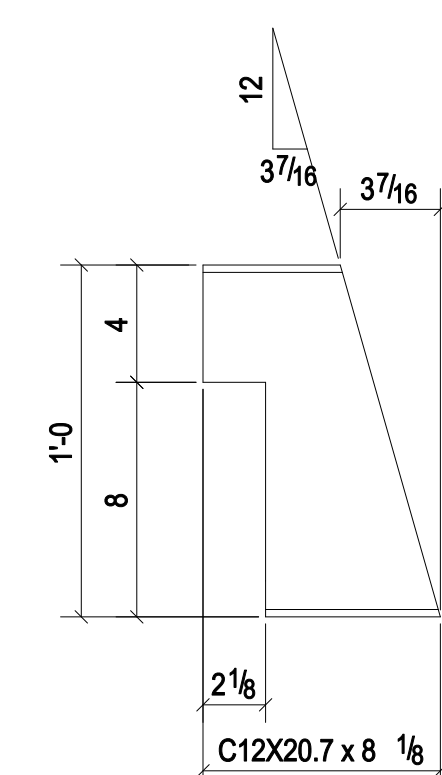
ONE - BEAM - m1415
(GR-A36)



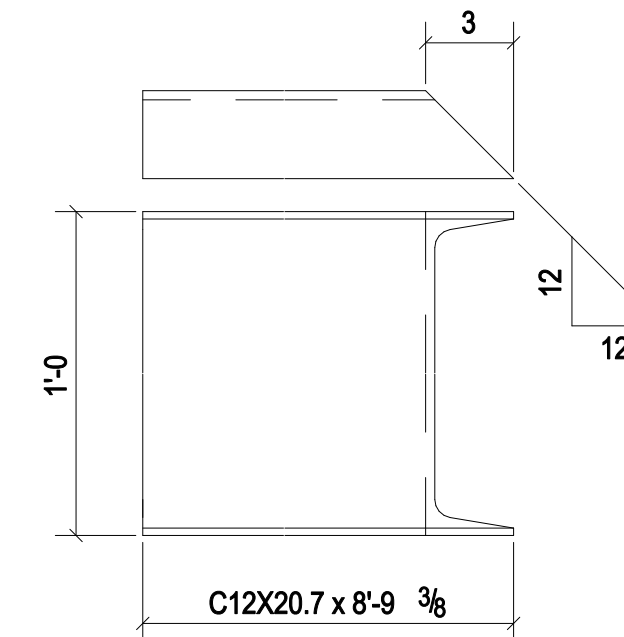
ONE - STAIR - m2146
(GR-A36)



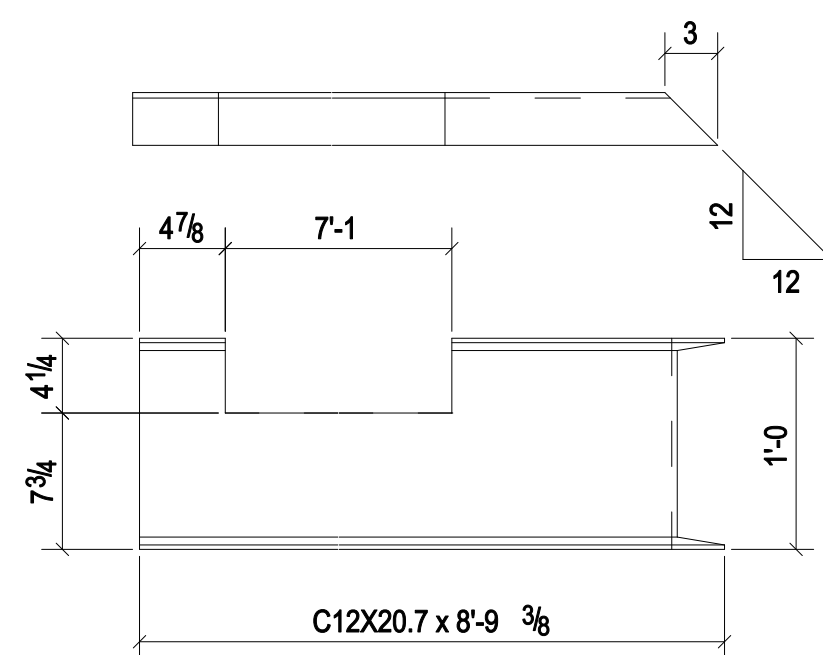
ONE - STAIR - m2151
(GR-A36)



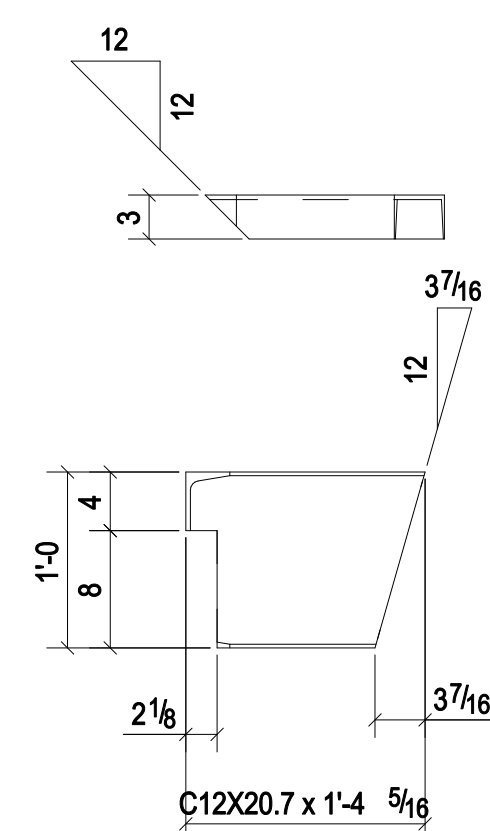
ONE - STAIR - m2155
(GR-A36)



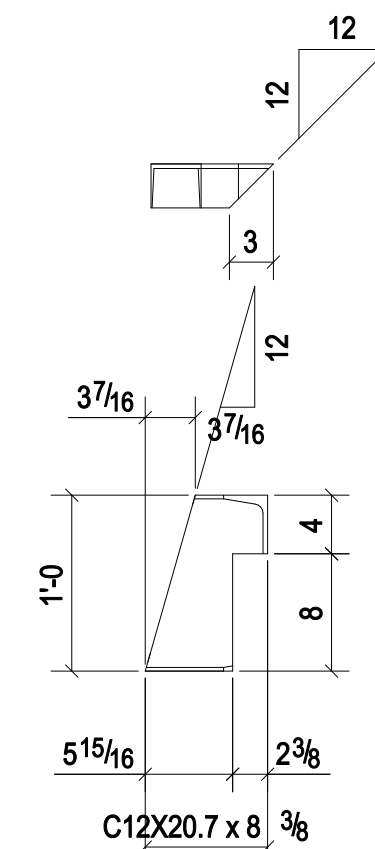
ONE - BEAM - m2158
(GR-A36)



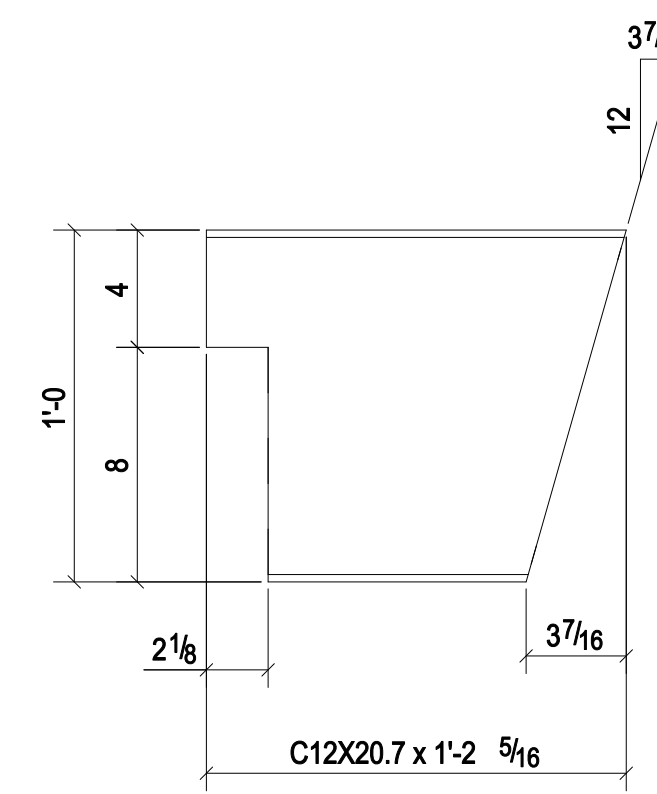
ONE - BEAM - m1986
(GR-A36)



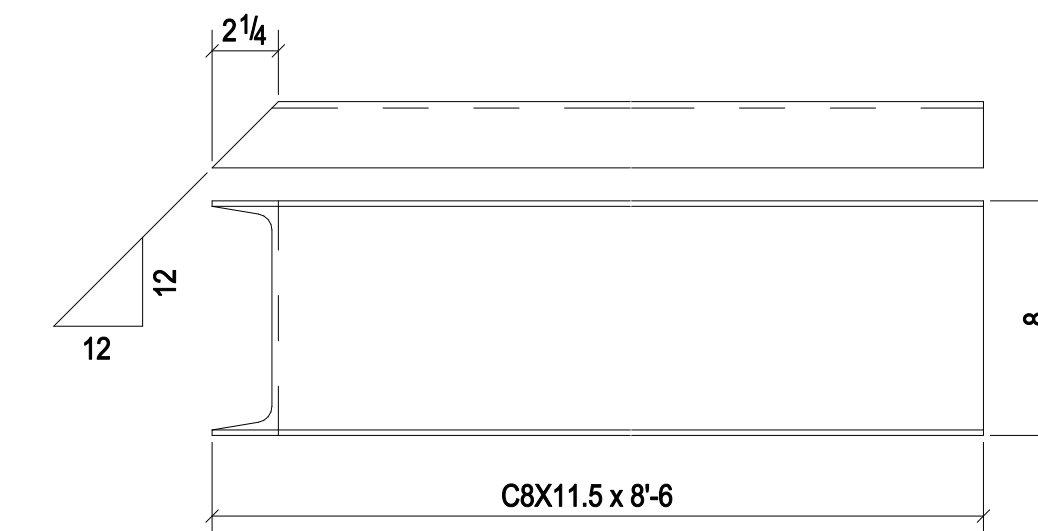
ONE - STAIR - m2149
(GR-A36)



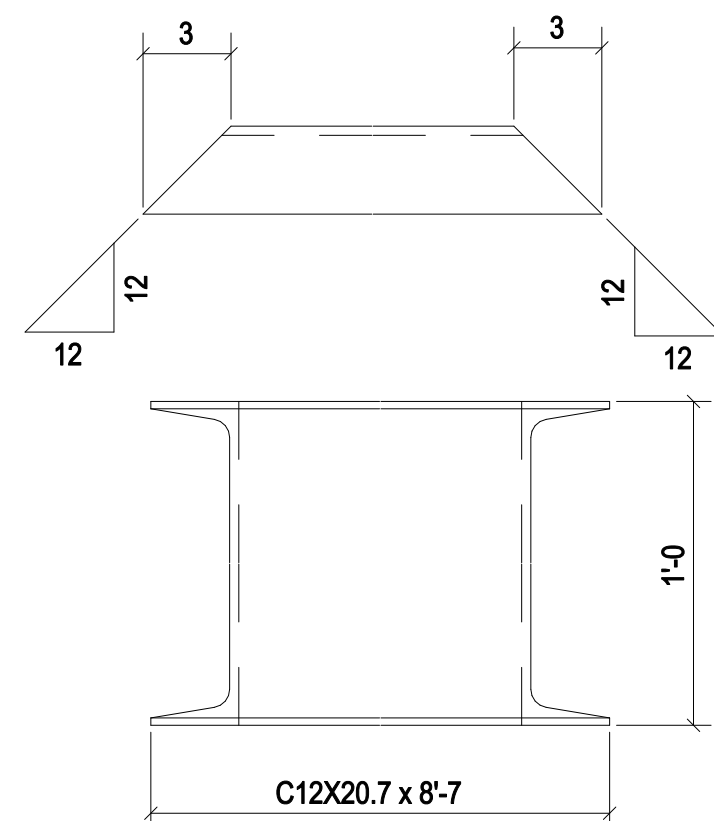
ONE - STAIR - m2153
(GR-A36)



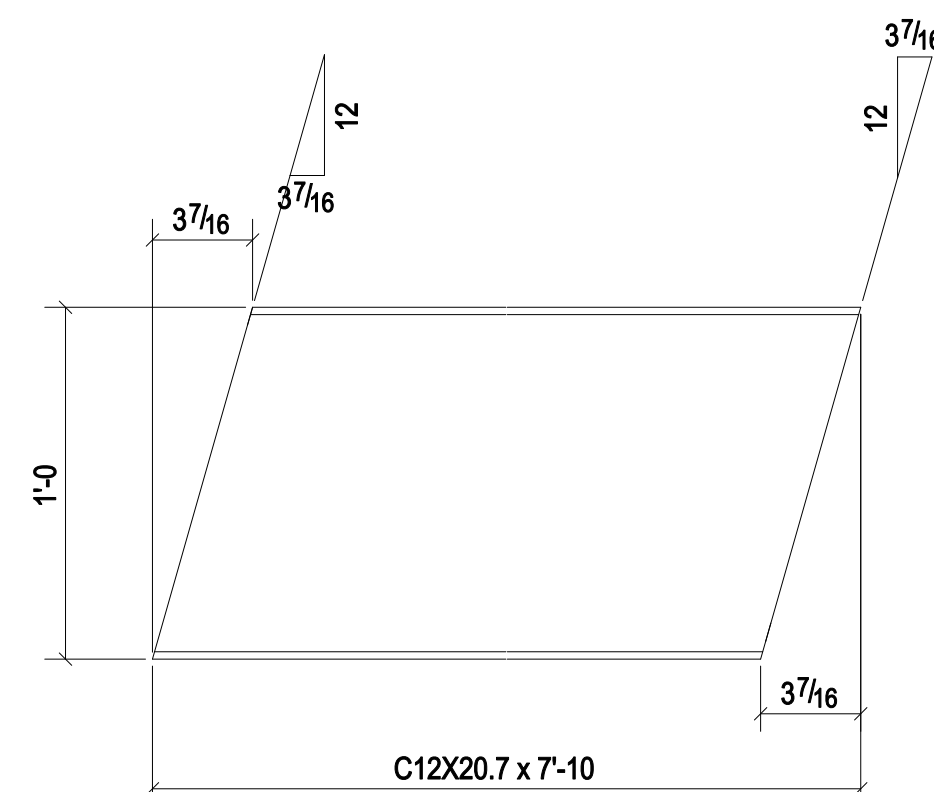
ONE - STAIR - m2156
(GR-A36)



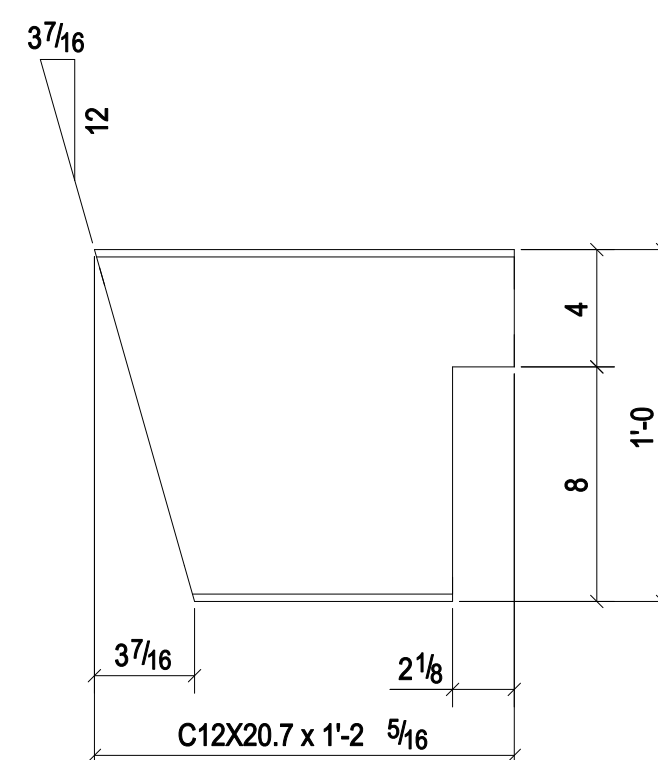
ONE - BEAM - m2197
(GR-A36)



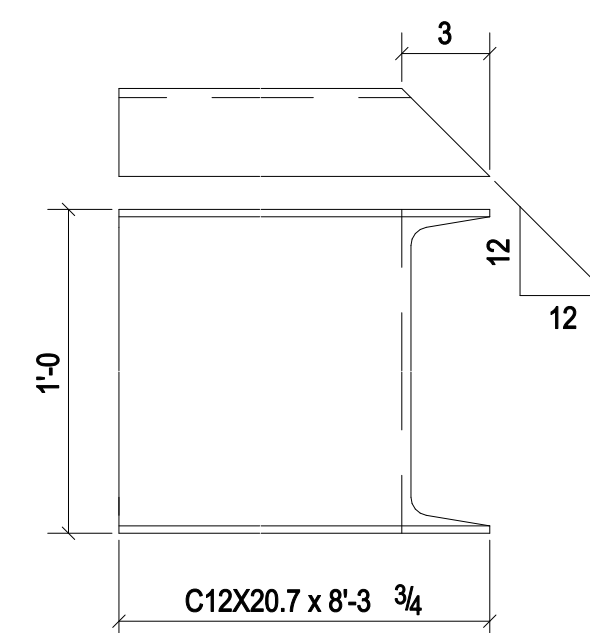
ONE - BEAM - m2085
(GR-A36)



ONE - STAIR - m2150
(GR-A36)



ONE - STAIR - m2154
(GR-A36)



ONE - BEAM - m2157
(GR-A36)

SHOP DRAWING DISCLAIMER
ALL INFORMATION PROVIDED ON THESE DRAWINGS ARE PREPARED IN ACCORDANCE TO THE CONTRACT DOCUMENTS AND THE SPECIFICATIONS. ALL CLOTTED AREAS SHOWN ARE DUE TO LACK OF INFORMATION PROVIDED BY THE CONTRACT DOCUMENTS OR SPECIFICATIONS, BUT PREPARED WITH ALL THE INFORMATION AVAILABLE TO US. WE MAY HAVE THESE AREAS APPROVED BY THE GENERAL CONTRACTOR, ARCHITECT, & ENGINEER. BEFORE WE CAN START FABRICATING ANY MATERIAL, PLEASE RESPOND WITH THE INFORMATION BY MARKING UP OUR SHOP DRAWINGS.

CHANGES PER RF#	
REFERENCE CONTRACT SHEETS	
WELDS: E70XX	
HOLES: 13/16" HOLES UNO.	
STEEL: ASTM A36 UNO.	

- STANDARD SHOP NOTES**
1. EA. END OF MATL. MAY DEVIATE FROM DIMS SHOWN BY 1/2" MAXIMUM. ALLOW TOLERANCE FOR LENGTHS AND SQUARENESS UNO.
 2. WELDERS ARE TO USE PCAW AND/OR SMAW PROCESS FOR ALL 1/2" THICKNESS.
 3. ALL MEMBERS TO BE FABRICATED WITH SHIPPING MARKS ON LEFT FLANGE END.
 4. ALL SHOP BOLTS TO BE A-325 UNO.
 5. BENDING DIMS ARE GIVEN FROM END OF MAIN MATERIALS & BOTTOM COR. & END OF BEAM.
 6. 150°/14° BOLTS @ COR. OF C/P ANGLE UNO.

THIS DRAWING IS RELEASED FOR

FABRICATION
ITEM NO. 01

NO.	FOR FABRICATION	DATE:	08/21/14
	REVISION DESCRIPTION		

ITEM NO. 01	ZA
DATE	08/21/14
DESCRIPTION	SHOP PRIMER
QUANTITY	1673

01G2

RKB